

DAKOTA RIDGE PHASE II

WOODSTOCK | ILLINOIS



FEATURES

- Dakota Ridge Phase 2
- 43 Lots Fully Entitled
- 1/2 Acre Lots
- Development Ready
- McHenry County
- **Price: \$1.3 million**

For Additional Information, Please Contact:

Pat Stanton Jr.
 p 630.922.6800 ext. 305
 c 630.269.2968
 e pat@patrickcommercial.com

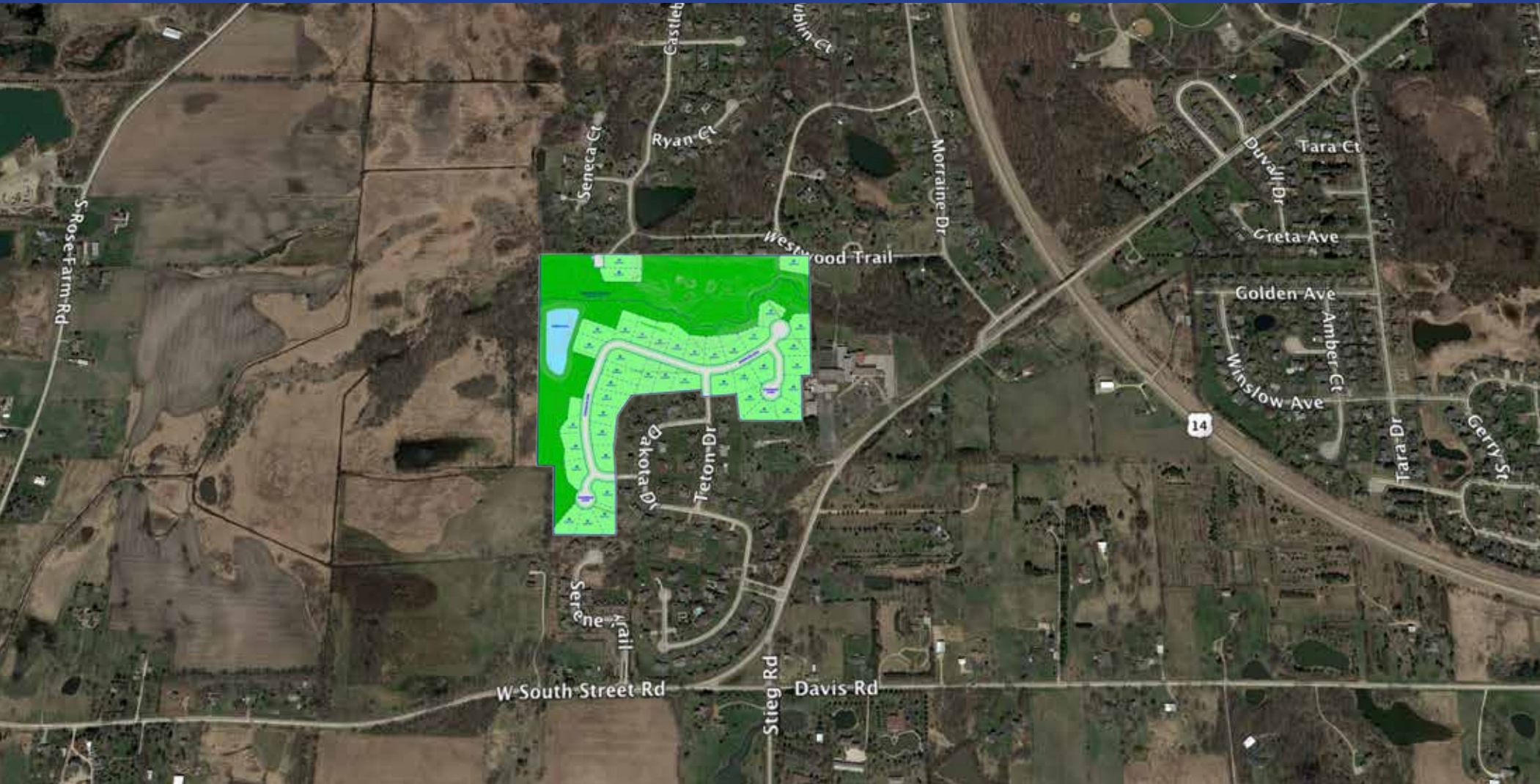
Patrick  **COMMERCIAL REAL ESTATE**

552 south washington street
 suite 200
 naperville, illinois 60540
 p 630.922.6800 f 630.922.6900

The information contained herein is subject to verification and no liability for omissions is assured. The price, data and other information are subject to change and listing may be withdrawn without notice.

DAKOTA RIDGE PHASE II

WOODSTOCK | ILLINOIS



For Additional Information, Please Contact:

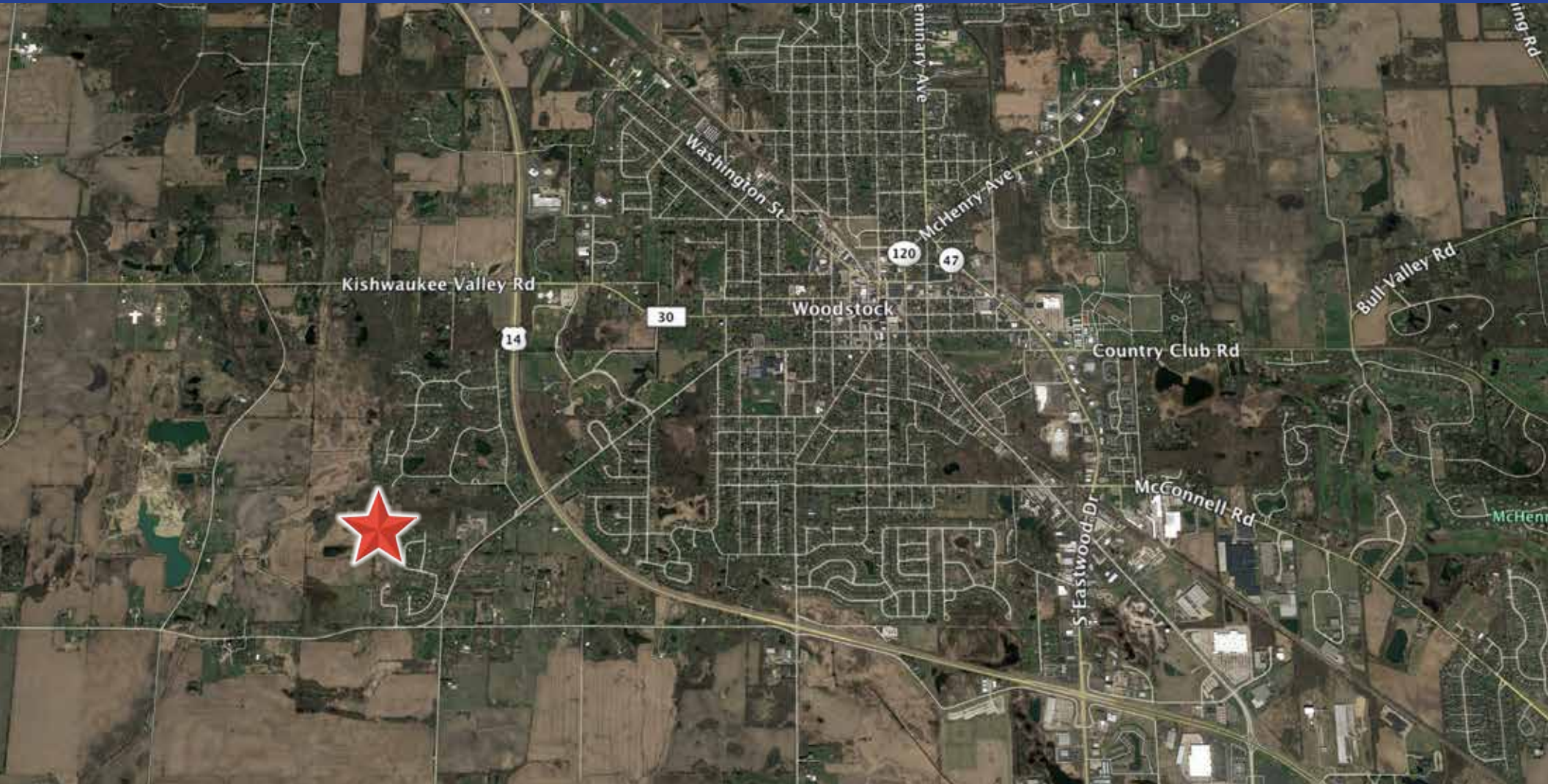
Pat Stanton Jr.
p 630.922.6800 ext. 305
c 630.269.2968
e pat@patrickcommercial.com



552 south washington street
suite 200
naperville, illinois 60540
p 630.922.6800 f 630.922.6900

DAKOTA RIDGE PHASE II

WOODSTOCK | ILLINOIS



For Additional Information, Please Contact:

Pat Stanton Jr.
p 630.922.6800 ext. 305
c 630.269.2968
e pat@patrickcommercial.com



552 south washington street
suite 200
naperville, illinois 60540
p 630.922.6800 f 630.922.6900